

# NetVault®: FASTRecover

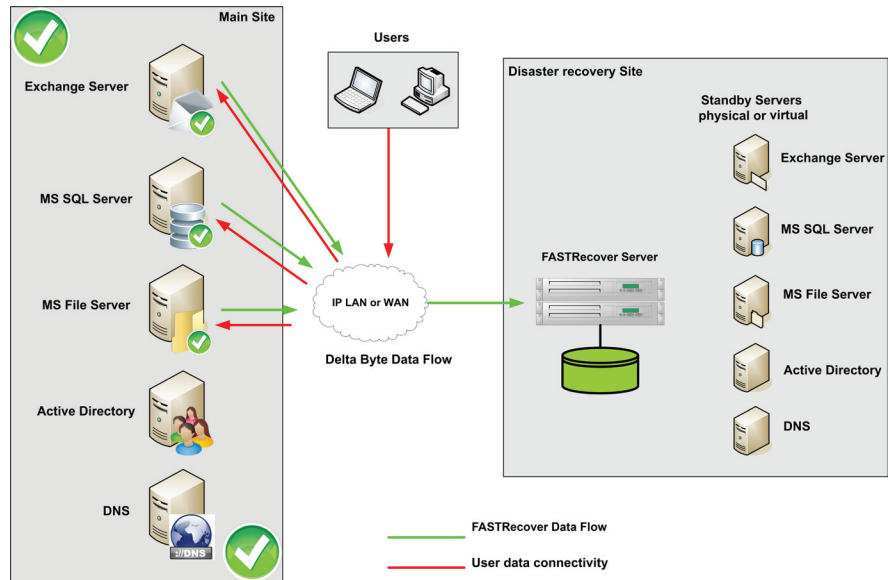
## Data Set Recovery to Alternate Locations Using NetVault®: FASTRecover

### FAST FACTS

- *Eliminates backup windows for Exchange, SQL Servers and Windows File Servers*
- *Provides extremely fast recovery to practically any-point-in-time; even when failing over*
- *Flexible deployment options allow for software-only or pre-configured appliance*
- *Recover to physical or virtual machines*
- *Integrates with traditional solutions, including BakBone's NetVault: Backup*
- *Reduces network contention*

### Data Recovery

With NetVault®: FASTRecover (NVFR) deployed at a Data Recovery (DR) location, protected data is constantly sent from the defined protected data sets. All changes made to the protected data sets are kept up to date to allow recovery point objective of one second before data loss. Fig.1. shows NVFR and user data during normal operation.



During a DR scenario, Fig.2. illustrated below, where the main site is unavailable, NVFR still has the capability to recover the protected data sets. Protected data sets can be recovered to alternate servers, physical or virtual. With alternate servers available the data sets can be recovered and made available in 30 seconds. Also with a simple script provided with NVFR to update DNS & Active Directory recovering an Exchange data set becomes a fast simple task with near zero data loss.

