

NetVault: Backup

Application Plugin Module™ (APM) for Exchange Server

FAST FACTS ABOUT:

NetVault: Backup APM for Exchange Server

- *Online ESE or VSS backup methods*
- *Protection for SCC, CCR, and LCR environments*
- *Full, Incremental, and Differential backups*
- *Copy-Only backups*
- *Parallel stream support*
- *Protection down to the individual database level*
- *Point-and-click UI*
- *Job scheduling*
- *Restores of complete Information Stores, individual Storage Groups, or individual databases*
- *Rename of Storage Groups during restores*
- *Restores to Recovery Storage Groups*
- *Restore to alternate Exchange Servers*
- *Optional mailbox or individual mailbox item recovery*

NetVault: Backup

- *User level access control*
- *Centralized management*
- *Heterogeneous platform support*
- *Easy to install APMs*
- *Extensive media verification*
- *Backup to disk with VTL/SVTL*
- *Event notification*
- *Pre and post processing scripts*
- *LAN-free backup support*
- *Supports DAS/SAN/NAS devices*

For many organizations, access to e-mail is truly business-critical; having a direct impact on both revenue generation and customer satisfaction. Microsoft Exchange continues to be the world's leading corporate messaging software as customers upgrade to take advantage of Exchange's built-in protective technologies that reduce spam and viruses while enabling confidential communications and allowing companies to meet compliance requirements. To protect business-critical communications, NetVault: Backup APM for Exchange Server offers a reliable and flexible data protection solution.

NetVault: Backup APM for Microsoft Exchange Server At a Glance

The NetVault: Backup APM for Exchange Server increases confidence in recoverability of Exchange and eliminates the need to learn Exchange internals to implement backup policies which are flexible enough to account for multiple recovery scenarios. Through an intuitive and easy-to-use GUI and automated workflow, the APM offers users a centralized console to setup, configure and define backup and restore policies for all your Exchange Servers. NetVault: Backup APM for Exchange Server offers granular control allowing the user to restore complete Information Stores, individual Storage Groups, or individual databases. With support for Exchange Server high-availability environments, such as Single Copy Clusters, Cluster Continuous Replication, and Local Continuous Replication, the APM allows you to maximize performance by allowing backup processes to take place on passive nodes and/or storage groups. Through automatic integration with a wide range of backup devices, you are confident that your Exchange Servers are being protected and stored offsite for disaster recovery purposes.

KEY BENEFITS

Minimize Downtime by Restoring Only What is Needed

With NetVault: Backup APM for Exchange Server, you simply select what needs to be restored, the backup set to restore from and NetVault: Backup's APM for Exchange Server automatically performs the restore. To

maximize availability, NetVault: Backup APM for Exchange Server is designed for granular recoveries, allowing users to recover complete Information Stores, individual Storage Groups, or individual databases.

Maximize IT Staff Efficiency

By relying on NetVault: Backup APM for Exchange Server to implement backup policies, users are free to focus on more critical tasks rather than repetitive and manual backup operations. Routine administrative options can be performed by less experienced personnel thereby empowering administrators to create comprehensive backup policies without the need to understand Exchange internals. NetVault: Backup APM for Exchange Server uses an automated workflow and complete point-and-click options for tasks such as job scheduling and restores.

Ensure Enterprise-Class Business Continuity

With offsite backups being an important part of the data protection plan for any mission critical application, NetVault: Backup APM for Exchange Server takes advantage of NetVault: Backup's fundamental integration with a wide range of backup devices which include: tape libraries, stand-alone tape devices, virtual tape libraries, and shared virtual tape libraries. NetVault: Backup offers the flexibility to select which backup device to store the backup on. You can store the backup online in a virtual tape library and duplicate the job to physical tape libraries shared by multiple Exchange Servers, propriety databases, or used for general backup purposes.

SYSTEM REQUIREMENTS

Exchange Versions

Exchange 2007, 2003 & 2000

Exchange Platforms

Windows

DOWNLOAD A FREE EVALUATION COPY

of NetVault: Backup APM for Exchange Server at:

www.bakbone.com/downloads

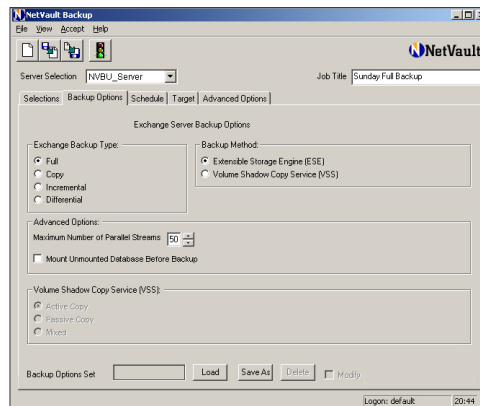


Figure 1. With the NetVault: Backup APM for Exchange Server, users are able to create backup policies flexible enough to account for multiple recovery scenarios.

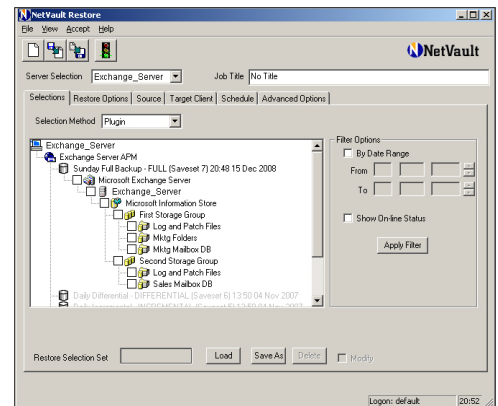


Figure 2. The NetVault: Backup APM for Exchange Server point-and-click interface minimizes downtime by allowing users to restore only what is needed.

Eliminate brick-level backup windows and reduce storage with individual item recovery

NetVault: Backup APM for Exchange Server provides an option for granular recovery of individual mailboxes or mailbox items without performing additional brick-level backups, eliminating backup windows and reducing storage costs. Users can also search for emails that meet specific criteria such as keywords, subject, date, or specific users across all mailboxes without analyzing individual mailboxes one at a time or using Microsoft Recovery Storage Groups. This speeds up individual email restores by reducing the time to identify the emails to be restored. Individual mailbox items can be restored to a PST file for further analysis, discovery or investigative purposes, thereby extending the use of individual message recovery beyond protection for accidental deletions.

BakBone's Universal Data Management Strategy

Universal Data Management allows a company to directly control and apply policies to data, regardless of which applications create, utilize or interface with that data. Customers can apply policies and control data in both structured repositories or as data dynamically moves across the network.

- **Integrated Data Protection** – The availability, retention, and security of data. BakBone's combined suite of data protection solutions allow customers to flexibly protect and make their most critical server and application data available, regardless of whether the data resides in physical, virtual or cloud environments.

- **Centralized Policy Management** – Provides a data-centric approach to creating, applying and maintaining policies across the enterprise. BakBone's Policy Management solutions will allow enterprises to apply and manage their policies on data, rather than on multiple disparate applications.
- **Message Management** – Providing the ultimate in visibility, control and performance for messaging in the enterprise, BakBone's Message Management solutions will allow companies to leverage Integrated Data Protection and Centralized Policy Management using a flexible and sophisticated routing platform for data in motion.

About BakBone

BakBone Software is the leader in Universal Data Management. This provides a data-centric approach to integrating data protection, centralizing policy management and managing organizations' messaging infrastructure to optimize performance, increase data availability and improve corporate compliance. Learn more about BakBone's Universal Data Management vision at www.bakbone.com or email info@bakbone.com.

©1999-2009 BakBone®, BakBone Software®, NetVault®, Application Plugin Module™, BakBone logo®, Integrated Data Protection™, NetVault: SmartDisk™, Asempra®, FASTRecover™, ColdSpark® and SparkEngine™ are all trademarks or registered trademarks of BakBone Software, Inc., in the United States and/or in other countries. All other brands, products or service names are or may be trademarks, registered trademarks or service marks of, and used to identify, products or services of their respective owners.

www.bakbone.com

 **BakBone**
The Power of Simplicity™

BakBone Global Headquarters
9540 Towne Centre Drive, Suite 100
San Diego, CA 92121
Toll Free Phone: 877-939-2663
Phone: 858-450-9009
Fax: 858-450-9929
Email: sales@bakbone.com

Asia Pacific Headquarters
Shinjuku Dai-ichi-Seimei Building
11th Floor
2-7-1 Nishi Shinjuku, Shinjuku-ku
Tokyo, Japan 163-0711
Phone: 81-3-5908-3511
Fax: 81-3-5908-3512
Email: sales@bakbone.co.jp

Europe Headquarters
100 Longwater Avenue
Green Park
Reading
RG2 6GP
United Kingdom
Phone: 44 (0)1189-224-800
Fax: 44 (0)1189-224-899
Email: sales_europe@bakbone.com

86824-09-14-09