

NetVault: Backup

Application Plugin Module™ (APM) for SharePoint

FAST FACTS:

NetVault: Backup APM for SharePoint

- *STSADM Based Online Backups*
- *Protection for Single Server and Server Farm Deployments*
- *Full and Differential Backups*
- *Individual Site Collection Backups*
- *Point-and-Click GUI*
- *Job Scheduling*
- *Restores of Complete Farms, Individual Web Applications or Individual Content Databases*
- *Relocate Site Collections to Alternate Farms*
- *Disaster Recovery to Same or Alternate Farm*

NetVault: Backup

- *Centralized Management*
- *Heterogeneous Platform Support*
- *Ease-of-Install of APM's*
- *Backup to Disk with SVTL*
- *Event Notification*
- *Pre-and Post Processing Scripts*
- *LAN-free Backup Support*
- *Supports DAS/SAN/NAS Devices*

Microsoft Office SharePoint Server 2007 is the latest component to be added to Microsoft's Office product family and is targeted to help organizations facilitate collaboration, provide content management features, implement business processes, and supply access to information that are essential to organizational goals and processes. NetVault: Backup APM for SharePoint provides a simple and powerful data protection solution when deploying SharePoint for the first time or for ensuring business continuity with preexisting SharePoint installations.

NetVault: Backup APM for SharePoint at a Glance

NetVault: Backup APM for SharePoint provides protection from disasters, media failure and wide ranging data corruption. Through an intuitive and easy-to-use GUI and automated workflow, the APM offers users a centralized console to setup, configure and define backup and restore policies. NetVault: Backup APM for SharePoint offers granular control that minimizes downtime by allowing the user to restore complete farms, individual web applications or individual content databases. Through automatic integration with a wide range of backup devices, SharePoint data is protected and safely stored off-site to meet your disaster recovery and business continuity goals.

Utilizing SharePoint's STSADM utility, NetVault: Backup APM for SharePoint offers the flexibility to backup the entire SharePoint Farm including the configuration database and Shared Service Providers or individual site collections.

KEY BENEFITS

Increases Confidence and Reduces Risk While Deploying SharePoint

NetVault: Backup APM for SharePoint is flexible enough to account for a number of recovery scenarios. By relying on NetVault: Backup APM for SharePoint to implement your backup policies, you can focus on more critical tasks without risking your ability to recover exactly what is needed in the event of a failure. In addition, an IT managers' confidence is increased by knowing their SharePoint data is protected, no matter what.

Minimize downtime by restoring only what is needed

With NetVault: Backup APM for SharePoint, administrators will have only minimal involvement when issuing each command required in the recovery process and will experience faster and more reliable recovery. To maximize availability, NetVault: Backup APM for SharePoint is designed for granular recoveries, allowing users to recover complete farms, individual web applications or individual content databases.

Automatic Integration of Backup Devices Ensures Business Continuity

With off-site backups being an important part of the data protection plan for any mission critical application, NetVault: Backup APM for SharePoint takes advantage of NetVault: Backup's fundamental integration with a wide range of backup devices.

NetVault: Backup APM for SharePoint gives you the confidence that your SharePoint environments are being protected and stored offsite for disaster recovery purposes. At the same time, it frees administrators from being available 24x7 because less experienced SharePoint administrators can initiate restores with confidence that they will be performed correctly and as quickly as possible, thereby reducing downtime and improving business continuity.

SYSTEM REQUIREMENTS

SharePoint Versions

Windows SharePoint Services 3.0

Office SharePoint Server 2007

SharePoint Platforms

Windows x86-64

Windows x86

NetVault: Backup Server

Earliest NetVault: Backup

Release Supported: 8.0 Update 2

DOWNLOAD A FREE EVALUATION COPY

of NetVault: Backup APM for SharePoint:

www.bakbone.com/products/downloads

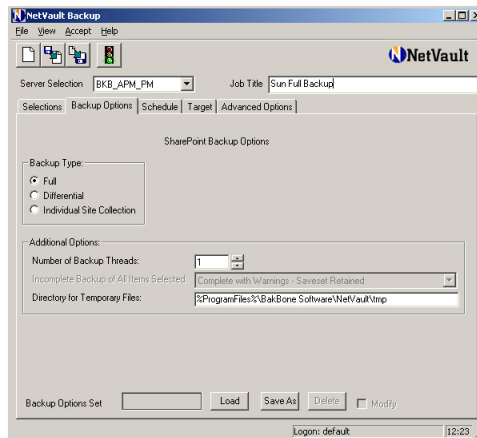


Figure 1. NetVault: Backup's APM for SharePoint provides flexible backup options that provide for multiple recovery scenarios without the need for complex scripting.

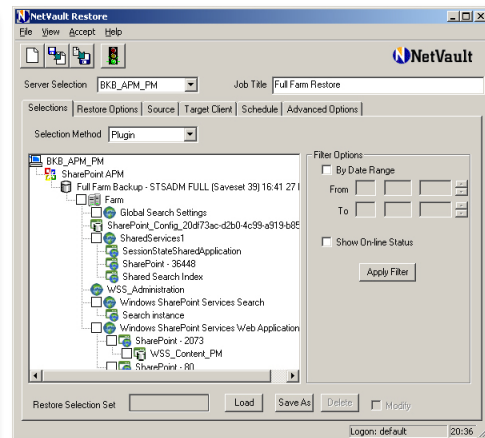


Figure 2. The NetVault: Backup APM for SharePoint point-and-click interface minimizes downtime by restoring only what is needed whether it is a complete farm, individual web application or individual content databases.

Integrated Data Protection

BakBone's Integrated Data Protection™ (IDP™) strategy provides a comprehensive suite of integrated, heterogeneous cross-platform data protection technologies that are seamlessly managed from a single console. IDP enables administrators to easily and cost-effectively achieve high data availability, set schedules, manage policies, as well as control and report on their storage environment. BakBone's IDP framework consists of two key layers: the Core Services Managers™ and the individual data availability and protection technologies. BakBone's technology portfolio today consists of NetVault: Backup, a comprehensive backup and recovery solution, NetVault: Report Manager, advanced storage reporting and NetVault: Replicator, a replication solution for high availability.

About BakBone

BakBone is committed to making data protection a simple, straightforward process while delivering its Integrated Data Protection (IDP) strategy through an award-winning product suite. Thousands of users worldwide leverage BakBone's IDP approach to simplify the management of multi-platform environments with a portfolio of backup, disaster recovery, replication and storage reporting solutions for Linux, Windows, Unix and Mac OS environments. BakBone's products offer a single point of control for managing resources across all platforms, providing improved operational efficiency, reduced system downtime, improved availability and enhanced security to support the business growth of enterprise environments. BakBone is headquartered in San Diego, Calif. For more information about BakBone, visit www.bakbone.com or email info@bakbone.com.

©1999-2008 BakBone Software®, the BakBone logo®, Application Plugin Module®, and NetVault® are trademarks or registered trademarks of BakBone Software, Inc., in the United States and/or in other countries. All other brands, products or service names are or may be trademarks, registered trademarks or service marks of, and used to identify, products or services of their respective owners.

www.bakbone.com

 **BakBone**
The Power of Simplicity™

BakBone Global Headquarters
9540 Towne Centre Drive, Suite 100
San Diego, CA 92121
Toll Free Phone: 877-939-2663
Phone: 858-450-9009
Fax: 858-450-9929
Email: sales@bakbone.com

Asia Pacific Headquarters
Shinjuku Dai-ichi-Seimei Building
11th Floor
2-7-1 Nishi Shinjuku, Shinjuku-ku
Tokyo, Japan 163-0711
Phone: 81-3-5908-3511
Fax: 81-3-5908-3512
Email: sales@bakbone.co.jp

Europe Headquarters
100 Longwater Avenue
Green Park
Reading
RG2 6GP
United Kingdom
Phone: 44 (0)1189-224-800
Fax: 44 (0)1189-224-899
Email: sales_europe@bakbone.com

52642_04-19-08