

NetVault: Backup

FAST FACTS

- Full VMware protection
- Advanced SAN/NAS support
- Comprehensive NDMP support
- Clustered application support
- Command line interface (CLI)
- Comprehensive media management
- Direct access restore
- Disaster recovery
- Disk-to-disk backup
- Dynamic device sharing
- Event notification
- Extensive platform support
- GbE device support
- High performance data movers
- Media data copy
- Network compression
- Load balancing
- Open file protection

Advanced Data Protection Solutions for Storage Networks

From the experts in open systems data recovery, BakBone Software's NetVault: Backup delivers enhanced data protection and enterprise-class functionality that scales to meet the demands of any sized environment. NetVault: Backup's flexible, modular architecture delivers proven reliability and high performance, with a unique combination of features designed to meet current and future data protection needs. Whether you are managing a few servers or a multi-site networked storage environment, there is a NetVault package designed to fit your needs.

KEY BENEFITS

Increased Automation

NetVault: Backup's event notification enhancements and policy based job management features are designed to provide increased automation, especially when deployed across heterogeneous storage networks. NetVault: Backup enables administrators to define, manage and monitor jobs from remote clients, while the flexible notification feature ensures business continuance with the ability to define event contexts and triggers, tailoring Net Vault to meet your unique requirements.

Enhanced Administrator Productivity

Policy based job management and NetVault's enhanced reporting capabilities simplify maintenance of your data protection strategies. Many activities such as job definition and event notification can be defined and modified at a group level, making administrative tasks quicker and easier.

Rapid Deployment

NetVault's automated installation and device configuration features make it easy to add, manage or re-deploy distributed data management components throughout an ever growing enterprise storage environment. With our modular architecture you can license only those components you need today, while easily expanding the system as your storage environment or performance requirements grow.

Lower Total Cost of Ownership

By dramatically simplifying implementation and networked storage administration, NetVault: Backup ensures improved data availability while reducing associated labor costs. NetVault: Backup can significantly lower your TCO and provide a return on your initial software investment in as little as six to nine months.

MAJOR FEATURES

Policy Based Job Management

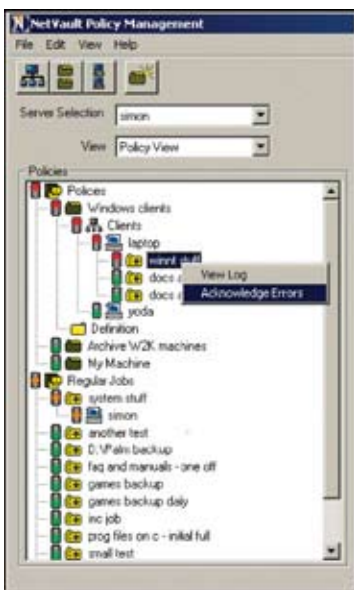
Comprehensive job management tools help storage administrators create data protection policies that efficiently define and manage backup strategies for all of your clients and critical applications. The Policy Management tools allow job templates to be created and easily applied to a single client or an entire group of clients, simultaneously. Once defined, policy-based administration allows you to monitor, manage and edit a group of jobs as a single entity. This improves productivity and reduces the human error associated with manual job management.

User Level Access

To ease storage administration and increase security, the User Level Access feature allows users to be defined with a specific set of privileges on an individual or group basis. For example, you may grant the ability to run reports and define backup jobs to your database administrators, while limiting all other users to restoring only their clients' files. User Level Access is ideal for extending a subset of NetVault: Backup's features to other members of the IT staff as well as end users and helps free network administrators for more critical tasks.

Enhanced Reporting

The improved reporting feature allows the administrator to schedule reports on many aspects of NetVault: Backup's operation with several output types available, such as HTML or comma delimited. Reports can be viewed dynamically, printed and/or emailed upon completion. In addition, a powerful report editing tool has been provided to allow user defined reports to be created. Reports can be executed conditionally or on a scheduled basis.



NetVault Policy View showing color coded active policy status.

SYSTEM REQUIREMENTS

DEVICE & LIBRARY SUPPORT

Most existing tape libraries and tape formats.

APPLICATION SUPPORT

Oracle, SQL Server, Exchange Server, SharePoint, DB2, Informix, Lotus Notes/Domino, MySQL, PostgreSQL, Sybase, Teradata.

SERVER PLATFORMS

Windows, Most Linux Platforms, Mac OS X, HP-UX Itanium, AIX, Solaris (SPARC & x86/x86-64)

CLIENT PLATFORMS

FreeBSD

VIRTUALIZATION PLATFORMS

Supports multiple virtual machine operating systems.

DOWNLOAD A FREE EVALUATION COPY

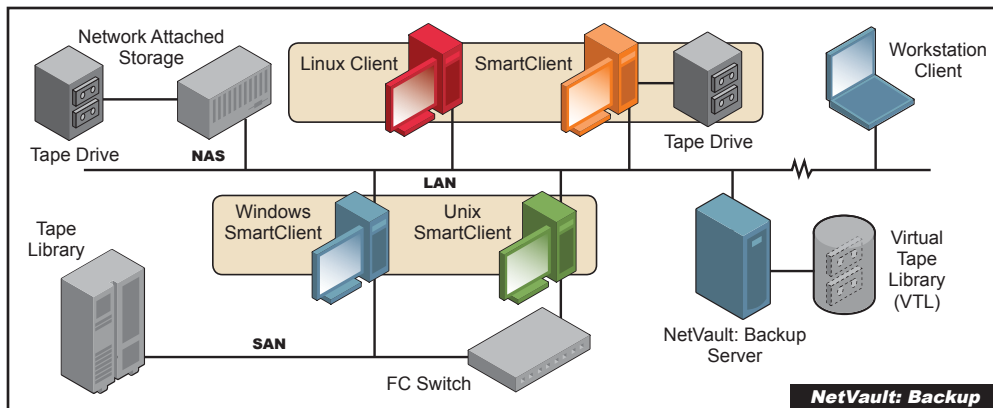
of NetVault: Backup at:
www.bakbone.com/downloads

Specifications and system requirements subject to change without notice.

For updated information, please visit
www.bakbone.com/backup.

©1999-2009 BakBone®, BakBone Software®, NetVault®, Application Plugin Module™, BakBone logo®, Integrated Data Protection™, NetVault: SmartDisk™, Asempra®, FASTRecover, ColdSpark® and Spark Engine are all trademarks or registered trademarks of BakBone Software, Inc., in the United States and/or in other countries. All other brands, products or service names are or may be trademarks, registered trademarks or service marks of, and used to identify, products or services of their respective owners.

www.bakbone.com



SAN/NAS Support

NetVault: Backup helps you leverage your investment in today's advanced storage networking technology. Large capacity libraries and high speed tape devices are easily shared within a NetVault: Backup domain. You can share media and libraries between multiple nodes to distribute backup operations while increasing data throughput and reducing network load. NetVault automatically determines the best data path and handles shared device arbitration.

NetVault: Backup Workstation Client

NetVault: Backup Workstation Client expands NetVault: Backup enterprise-class data protection to workstations by enabling protection for intellectual property stored on desktops and laptops using a shadowing process that creates local redundant copies to protect data against corruption and accidental deletion. Seamless integration with the NetVault: Backup Server protects the copies for long-term retention or disaster recovery. NetVault: Backup Workstation Client also maximizes IT staff efficiency by enabling end-user recovery of data from the Shadow Area without the assistance of the NetVault: Backup administrator.

Comprehensive Application Support

NetVault: Backup has a full suite of APMs to provide online support for your critical business database and messaging applications. Installed on the client, the APM communicates with these applications using a backup interface that is consistent with each application. Each APM's interface automatically adds application specific components to your backup and restore selection criteria.

BakBone's Universal Data Management Strategy

Universal Data Management allows a company to directly control and apply policies to data, regardless of which applications create, utilize or interface with that data. Customers can apply policies and control data in both structured repositories or as data dynamically moves across the network.

• Integrated Data Protection –

The availability, retention, and security of data. BakBone's combined suite of data protection solutions allow customers to flexibly protect and make their most critical server and application data available, regardless of whether the data resides in physical, virtual or cloud environments.

• Centralized Policy Management –

Provides a data-centric approach to creating, applying and maintaining policies across the enterprise. BakBone's Policy Management solutions will allow enterprises to apply and manage their policies on data, rather than on multiple disparate applications.

• Message Management –

Providing the ultimate in visibility, control and performance for messaging in the enterprise, BakBone's Message Management solutions will allow companies to leverage Integrated Data Protection and Centralized Policy Management using a flexible and sophisticated routing platform for data in motion.

About BakBone

BakBone Software is the leader in Universal Data Management. This provides a data-centric approach to integrating data protection, centralizing policy management and managing organizations' messaging infrastructure to optimize performance, increase data availability and improve corporate compliance. Learn more about BakBone's Universal Data Management vision at www.bakbone.com or email info@bakbone.com.

BakBone Global Headquarters
9540 Towne Centre Drive, Suite 100
San Diego, CA 92121
Toll Free Phone: 877-939-2663
Phone: 858-450-9009
Fax: 858-450-9929
Email: sales@bakbone.com

Asia Pacific Headquarters
Shinjuku Dai-ichi-Seimei Building
11th Floor
2-7-1 Nishi Shinjuku, Shinjuku-ku
Tokyo, Japan 163-0711
Phone: 81-3-5908-3511
Fax: 81-3-5908-3512
Email: sales@bakbone.co.jp

Europe Headquarters
100 Longwater Avenue
Green Park
Reading
RG2 6GP
United Kingdom
Phone: 44 (0)1189-224-800
Fax: 44 (0)1189-224-899
Email: sales_europe@bakbone.com

 **BakBone**
The Power of Simplicity™